

Details regarding Participants' accommodation

The modern city of Dion is located just near the remnants of the ancient city, approximately 20km from Katerini and 70 km from Thessaloniki. It is situated on the foot of Mount Olympus and that is why it is reach of biota.

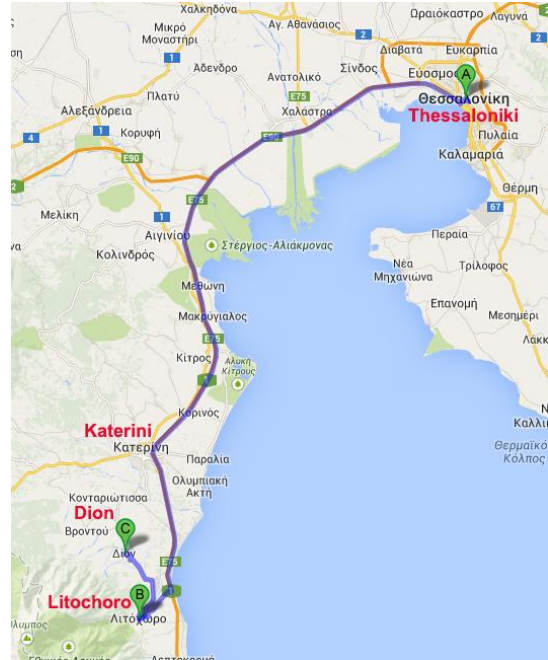
The city has about 1000 habitants and is touristically explored, due to the significant archaeological site, its vicinity to Mount Olympus and the Olympus Festival, organized every summer in the area.

For more info you can visit the site:

<http://www.dion-olympos.gr/en/en.home>

<http://www.festivalolympou.gr/index-en.php>

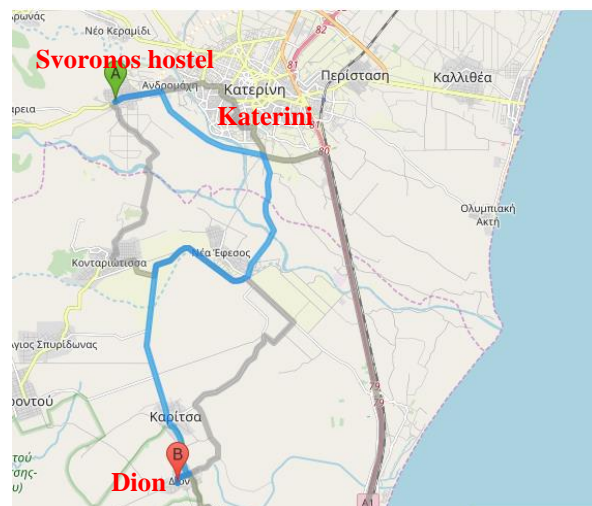
<http://www.olympusfd.gr/us/default.asp>



In Dion among others there is:

- The **archaeological site**, where all practical and in situ work will be realized (500m from the city center)
- The **Center of mosaics**, where all lectures, as well as the opening and closing ceremony will be hosted
- The **Archaeological museum**
- **'Ariadni' Restaurant** where breakfast and dinner will be served during the stay at Dion

Participants will be hosted in the ecclesiastic hostel of the Mitropolis of Katerini at Svoronos, which is located 5km far from the town of Katerini and 20km far from Dion.



According to MARE.20 Program, lectures and in situ applications will be realized at Dion, while the laboratory work will be realized in Thessaloniki, at the Laboratory of Building Materials, School of Civil Engineering, Aristotle University of Thessaloniki.

All round trips from Svoronos to Dion and Thessaloniki, will be made with the MARE.20 bus.

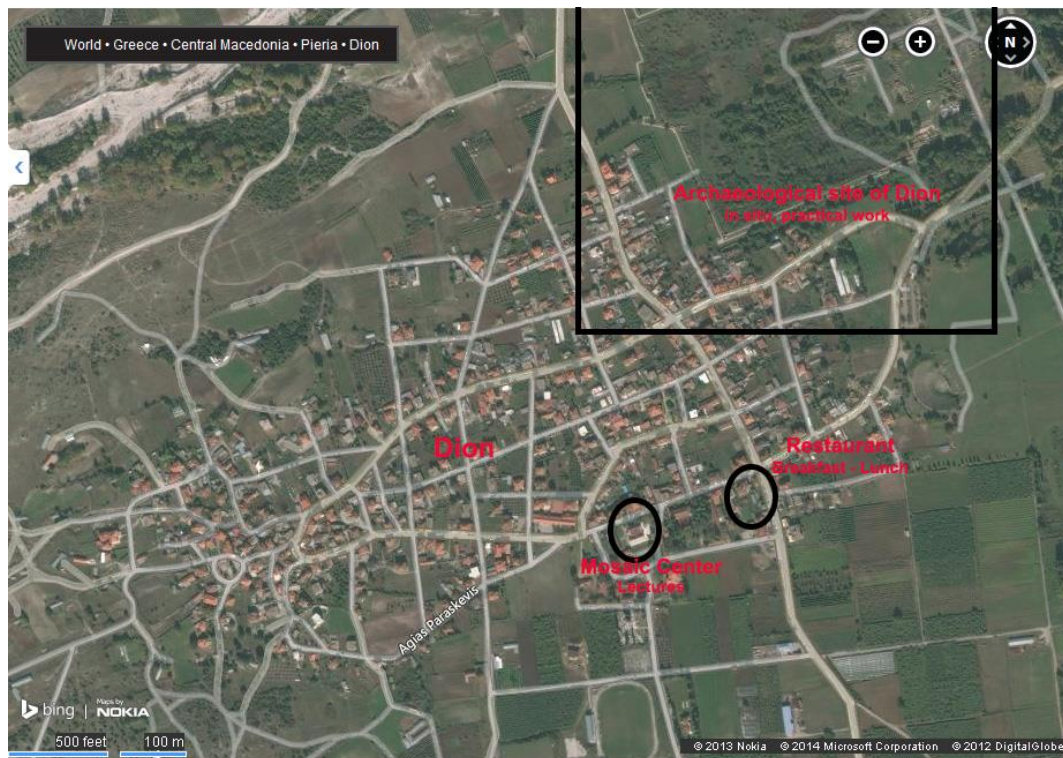
The bus schedule will be:

Svoronos (hostel) → Dion or Thessaloniki: 08:30

Dion or Thessaloniki → Svoronos (hostel): 19:00

According to the schedule:

- Breakfast will be served at Dion Restaurant “Ariadni” at **08:30-09:30** (when lectures will be realized at Dion)





MARE.20

Materials and Techniques for the Restoration of Monuments
Compatibility, Durability, Sustainability and Economy in
Retrofitting Heritage Structures

MARE.20

Materials and Techniques for the Restoration of Monuments

Compatibility, Durability, Sustainability and Economy in Retrofitting Heritage Structures

30 August – 11 September 2020